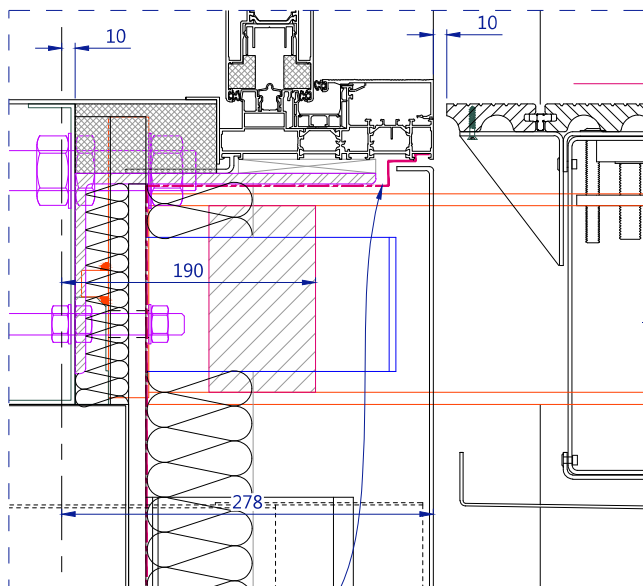


Facade line/position to follow the information supplied by FK this follows the grid line as either 358 or 278mm offset and the door cill profile 233mm off gridline. (see drawing for further details)



Indicative waterproofing as per FK

Walk on cill detail by others

FFL

2 Detail view
Scale 1:4

Building

3mm angle tack welded into I beam not waterproof. To finish flush with side of I beam.

158x152x30 Galvanised stub brackets

Waterproof by others

Farrat Thermal Break

Indicative Fire break
(Position TBA by others)

Gusset welded into web of arm to assist waterproofers in waterproofing the balcony arms (Web infill not waterproof seal).

3 Plan View

On level 1 in locations shown on GA plan, some balconies have extra water collection tray- refer to details on M001-SAP-ZZ-DR-X20-220

1 Section Through

Line of rainscreen

Aluminium Profiled Capping
Satin Anodized Finish

10+10mm THK laminated
clear toughened and
heatsoaked glass panels

Sapphire composite decking.
Sapphire Brown P6 Sample
provided and AHR approved.

Screen printed glass
RAL 9003.

60 diameter discs on
the front of the glass

Top of screen printed band

M30x80 Galvanised bolt

M16x80 M16 Galvanised bolt

Inside FFL

Anti slid
off plate.

18

10

20

6

15

10

200

1402

356

10

15

10

10

10

10

10

10

Aluminium balcony
cassette


158x152x30 Galvanised stub
brackets

Soffit to stop 20mm away
from rainscreen

Aluminium rainscreen
panel (By others)

Aluminium soffit trays
PPC RAL 9003

158x152x30 UC
galvanized support arm

C5	19.05.18	Issued For Construction
C4	29.11.17	As per markup
C3	20.11.17	Updated to arch Comments - For approval
Rev	Date	Description
Project		
Media City		
Location		
Tower Block		
Drawing Title		
Typical Balcony Section		
 SAPPHIRE balustrades		
www.sapphirebalustrades.com call 0844 88 00 553		
Drawn by	Checked by	Scale @ A3
ARD	EL	1:10
Sapphire Ref.		
529930 SE-01 C5		

Media City drawing reference number
M001-SAP-XX-ZZ-DR-X-20-201