



# Case Study



Wirral Waters

*“ Can't say anything that's not nice about Sapphire - have been good to deal with. Sapphire worked with us on the procurement, and everything just got done, very smooth operation. Where there have been issues, Sapphire has stepped out and got the job done! ”*

Graham Construction, Wirral Waters



# Wirral Waters

**Client:** The Peel Group

**Contractor:** Graham Construction  
Morgan Sindall

**Architect:** Glenn Howells Architects

**Location:** Wirral, Merseyside

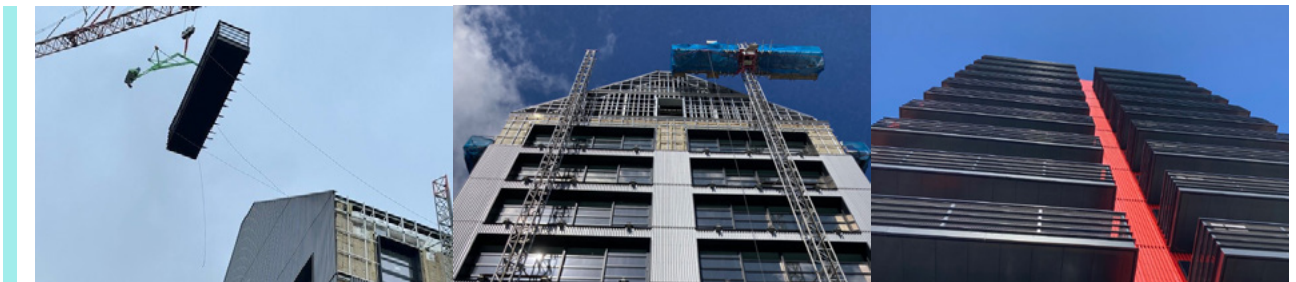
**Balconies:** 82 balcony lifts



## History

Wirral Waters is embarking on an ambitious journey to transform the waterfront with the Millers Quay development, a joint venture between Peel L&P, the Council, and the Legacy Foundation. This £90m initiative aims to breathe new life into the area, creating a vibrant community with 500 units of one and two-bedroom apartments, including affordable homes. Positioned as a catalytic, south-facing waterfront housing project, Millers Quay offers stunning views across Liverpool, promising not just homes but a revitalised connection to the area's storied past as a world-leading dock.

Emphasising its commitment to the local community and the environment, the development has been lauded for its innovative approach to building sustainable and community-focused living spaces. By incorporating sustainable practices and focusing on creating a positive legacy, Millers Quay is poised to set a benchmark for future developments in the region.





## Streamlined by Innovation, Delivered by Sapphire

In realizing this vision, Sapphire's collaboration with Glen Howells Architects was instrumental. The architectural ambition for Millers Quay was to meld the rich heritage of the site with contemporary design, paying homage to the area's historical significance as a bustling dockyard. The design challenge lay in crafting balconies that resonated with the robust, functional aesthetics of Victorian-era ship railings, characterized by horizontal bars that would, however, pose safety risks for a residential setting.

Sapphire's solution was a masterclass in innovative design that honoured the site's legacy without compromising safety. By working closely with the architects, Sapphire developed a unique balustrade design utilizing mesh, which not only evoked the industrial styling reminiscent of the site's shipping roots but also ensured the balconies were safe and durable for families. This mesh design struck the perfect balance, allowing for the desired aesthetic impact while adhering to modern safety standards, thereby simplifying the balcony integration process without sacrificing the architectural vision.

The Wirral Waters' Millers Quay project stands as a testament to the power of collaborative innovation in redefining urban landscapes. Through early engagement and creative problem-solving, Sapphire helped transform architectural aspirations into reality, seamlessly blending historical homage with the needs of contemporary living. This development not only enhances the waterfront but also contributes to the community's growth, promising a sustainable and inclusive future for Wirral Waters.



# NBS Specification

## Wirral Waters

**Manufacturer** Sapphire Balconies Ltd 11 Arkwright, Road Reading, RG2 0LU  
0344 88 00 553  
[support@balconies.global](mailto:support@balconies.global)  
[www.balconies.global](http://www.balconies.global)

**Reference** Glide-On™ aluminium Cassette® balconies with horizontal bar balustrades and stainless steel diagonal welded mesh

**Balcony anchor** Cast-in M30 & M16 anchors incorporating thermal breaks

**Arms** 2-piece galvanised steel

**Cassette® structure** Standard 400mm modular Glide-On™ Cassette® balconies

**Soffits** Polyester powder-coated aluminium-controlled draining soffits

**Deck finish** Accora® aluminium decking fixed with hidden clips

**Toprail** 100 x 34mm extruded profile anodised aluminium capping to the top of bar balustrades

**Guarding** 50 x 50 mm structural posts with stainless steel diagonal welded mesh and aluminium horizontal bars face fixed to the outside of balustrade posts

**Base fixing** Mechanically fixed to Cassette®

**Fascias** Polyester powder-coated aluminium fascia trim to conceal edge of balcony frame



Sapphire reserves the right to alter specifications and designs without prior notice. Most designs are owned / registered by Sapphire most of which are protected by registered designs, trademarks and patents. All details are given as guidance only and may vary according to project application.

© All rights reserved, no part of this publication may be reproduced in any material form (including photocopying or storing it in any medium by electronic means and whether or not transiently, or incidentally to some other use of this publication) without the written permission of the copyright owner. Application for the copyright owner's permission to reproduce any part of this publication should be addressed to Sapphire.

All information has been carefully collated and efforts were made to ensure accuracy at the time of publication. Sapphire takes no responsibility for inaccuracies after the date of publication. MD0611245JE

 0344 8800 553  
 [www.balconies.global](http://www.balconies.global)  
 [support@balconies.global](mailto:support@balconies.global)

Sapphire Balconies Ltd  
11 Arkwright Road, Reading, RG2 0LU

 **SAPPHIRE**<sup>®</sup>